

FRAMEWORK GUIDE

Asset and Development Consultancy

Our consultancy frameworks connect you with experienced consultants ready to support your projects.



Architectural Services

Scope of Services:

Consultants on this Lot are able to provide advice on structural matters and design solutions for new build projects, specific needs accommodation and high rise dwellings. They're also able to provide advice in respect to low rise housing or any other property type.

Architects will support from project inception through to completion on site, and onto the defects period. This includes: RIBA Plan stages 0-7, strategic definition, preparation and briefing, concept design, spatial coordination, technical design, manufacturing and construction, handover and use.

Framework Reference	2024S 000-016416
Awarded	21/01/2025
Expires	20/01/2028
Procured Under	PCR2015
Framework Tender	55% cost and 45% quality



Architectural Services Suppliers



1



2



3



4



5



6



7

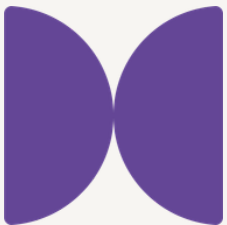
Development Management Services

Scope of Services:

This Lot is designed to help you with your development programmes. It connects you to experienced development consultants able to support you across all RIBA stages – from feasibility to finishing works on site.

Consultants on this Lot are able to help with:

- Land acquisition
- Scheme viability and appraisal
- Pre-planning and planning application support
- Cost budgeting and contractor procurement
- On-site project management and quality assurance



Development Management Services Suppliers



1

AIREY MILLER

2



3

Feilden+Mawson

4

redloft

5

Beacon
Partnership

6

Altair

7



8

ASKIVAL

9

M&E Consultancy

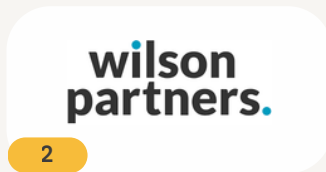
Scope of Services:

This Lot covers the provision of M&E consultancy services.

Contracts from this framework could cover the following services: lift consultancy, maintenance and electrical surveys, M&E designs and estimating, advice and design of tender documents and specifications.

The specification of this Lot is in accordance with current Chartered Institution of Building Services Engineers guidance.

Our Suppliers:



Multi-Disciplinary Consultancy

Scope of Services:

This Lot covers a range of traditional consultancy services. It's also a great option if you're looking to consolidate your consultancy requirements under one service provider.

Consultants on this framework are able to cover multiple difference services. It can be used for contracts that cover one service, or consolidate several under one contract. The services include:

- Project Management
- Building Surveying
- Structural Engineering
- Clerk of Works
- Quantity Surveying
- Employers Agent
- Principal Designer



Multi-Disciplinary Consultancy Suppliers



1



2



3



4



5



6



7



POTTER RAPER

8

AIREMILLER

9



10



11



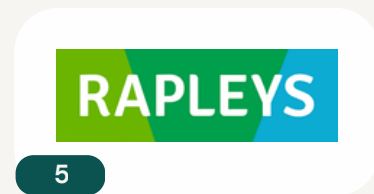
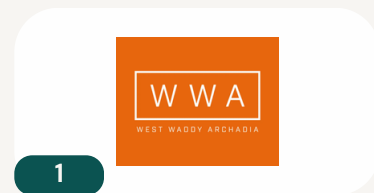
12

Planning Services

Scope of Services:

The planning consultants on this Lot are able to offer a wide range of advice on all matters concerned with planning, development and environmental issues.

Our Suppliers:



Stock Condition Surveys

Scope of Services:

This Lot covers the provision of stock condition surveys.

Our Suppliers:

 1	 2	 3
 4	 5	 6
 7	 8	 9
 10	 11	 12

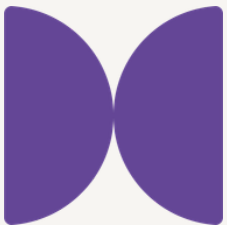


Zero Carbon Consultancy

Scope of Services:

This Lot is designed to help you with your decarbonisation programmes. It connects you to experienced zero carbon consultants able to carry out assessments, and support you with both development and refurbishment programmes.

Consultants on this Lot are able to deliver the following services: BREEAM assessments, RdSAP, SAP & EPC assessments, HQM assessments, Passivhaus assessments, SBEM & Life Cycle Carbon assessment, Psi value calculations



Zero Carbon Consultancy Suppliers



1



2



3



4



5



6



7



8



9

Accessing this framework

Access Options:

Direct Award

Customers are able to Direct Award to the top ranked suppliers providing that your requirement is within the scope of the framework. In exceptional cases, you are able to direct award outside of number 1 with a strong justification.

How long will this take me? 3 – 4 weeks depending on your internal approval process.

[Click to view our process map](#)

Mini-Competition

You're able to run a mini-competition to call off this framework. You'll be able to use your own specification and cost model. You can also choose your own cost / quality split and quality questions. All pricing submitted by contractors must be linked to the framework.

How long will this take me? 6 – 8 weeks depending on your internal approval process.

[Click to view our process map](#)



Frequently Asked Questions

Who can access this framework?

Any publicly funded body can use this framework. Access is not limited to SEC Members alone. [Full details can be found here.](#)

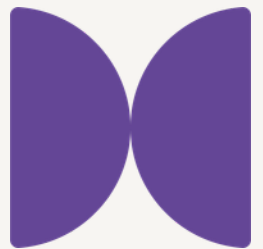
Is there a cost to access?

There is no access fee to use this framework. A levy % dependant on whether you are a guest or member is collected directly from the contractor once a call off contract is awarded. This percentage will never be more than 1.5% for Members and 2% for Guests.

How do I access this framework?

If your organisation is already a SEC Member then you will not need to sign an additional Access Agreement. You're already signed up.

If your organisation is new to SEC, and would like to use our frameworks as a non-member then you will need to sign our Access Agreement. You'll only need to sign this once and you'll receive access to all our Frameworks and DPS's – even those we procure in the future. You can view a draft agreement here – [DRAFT Access Agreement \(Non-Members\)](#).



Why use SEC?

Working with us means partnering with a not-for-profit organisation dedicated to supporting the housing sector. Public procurement is what we do best – since 2005 we've ensured that every framework we procure is designed by and for our customers. And, we reinvest our surplus back into the housing sector through our Training and Insights programmes.

What it means for you:

- Fully compliant route to market with advice from procurement experts across each stage of your project
- Additional support with your technical documents, procurement strategy and contract management when you need it
- Amplified social value on top of what's already delivered through your contract. You'll also help fund our reinvestment programmes delivering training, sector insights and community projects

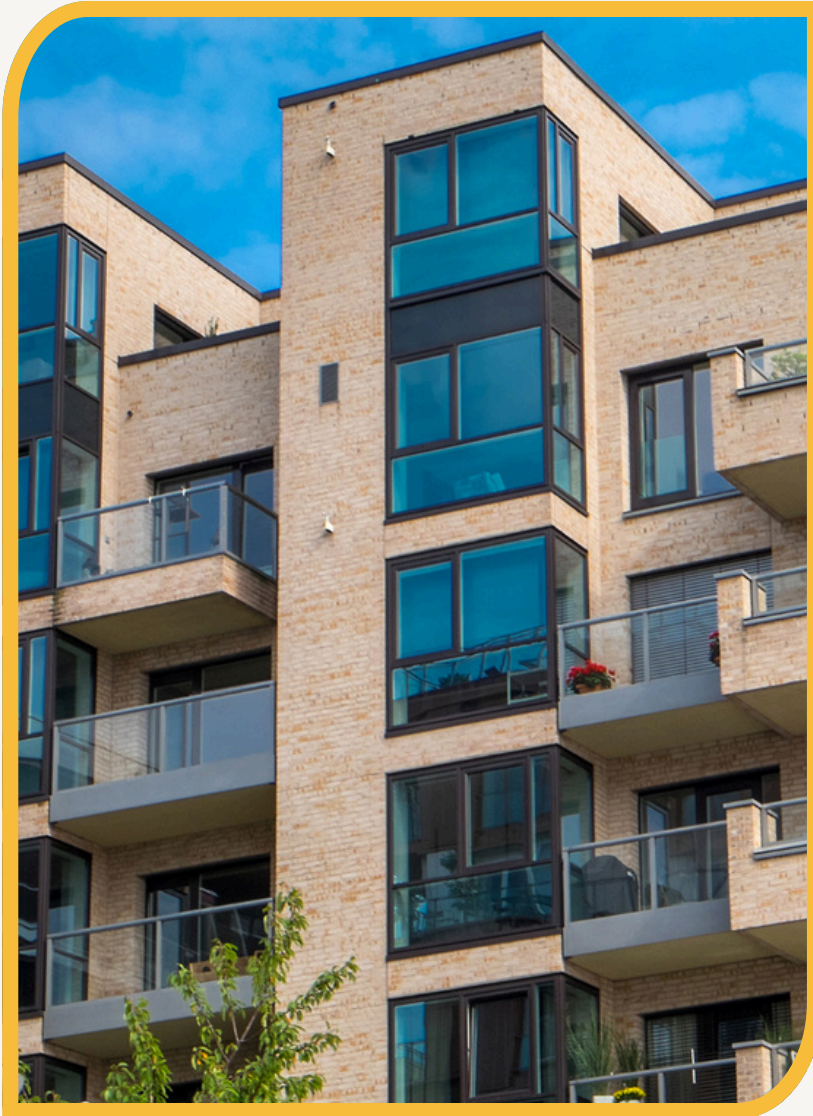


£1,000,000 investment in training that bridges the skills gap and £400,000 to community projects.

Plus £230,000 on insights projects that support better procurement practices.




Next Steps



We've got two options depending on where you are with your project.

Like to know a little more

Get in touch:

 0204 570 6637

 info@southeastconsortium.org.uk

 B1092 Galley Drive, Kent Science Park,
Sittingbourne, Kent, ME9 8GA

Ready to use this framework

[Contact Us | South East Consortium](#)