

FRAMEWORK GUIDE

Cleaning, Clearance and Grounds Maintenance

Appoint experienced contractors able to deliver cleaning, clearance and grounds maintenance across your buildings and estates.



Framework Overview

Scope of Services:

This Framework connects you to 4 experienced contractors ready to support you with your projects. Services they deliver include, but is not limited to, the following:

Cleaning – general needs, Homes for Older People Schemes (HOPS) and voids, pathways and parking areas, window cleaning, etc.

Clearance – bulk waste removal, clearing bin chute blockages, bin store cleaning and disinfection, etc.

Grounds Maintenance – litter picking, leaf clearance, weed killing and grass cutting, etc.

Our Suppliers:



| | |
|---------------------|--------------------------|
| Framework Reference | 2023/S 000-001743 |
| Awarded | 01/11/2023 |
| Expires | 31/10/2027 |
| Procured Under | PCR2015 |
| Framework Value | £25,000,000 |
| Framework Tender | 30% cost and 70% quality |

Accessing this framework

Access Options:

Direct Award

Customers are able to Direct Award to the top ranked supplier providing that your requirement is within the scope of the framework. In exceptional cases, you are able to direct award outside of number 1 with a strong justification.

How long will this take me? 3 – 4 weeks depending on your internal approval process.

[Click to view our process map](#)

Mini-Competition

You're also able to run a mini-competition to call off this framework. You'll be able to use your own specification and cost model. You can also choose your own cost / quality split and quality questions. All pricing submitted by contractors must be linked to the framework.

How long will this take me? Once you have your specification and cost model ready, the tender process takes approximately 6-8 weeks, depending on your internal approval processes.

[Click to view our process map](#)



Frequently Asked Questions

Who can access this framework?

Any publicly funded body can use this framework. Access is not limited to SEC Members alone. Full details can be [found here](#).

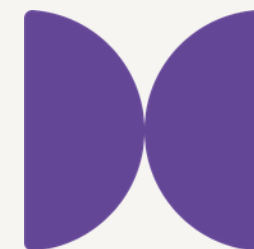
Is there a cost to access?

There is no access fee to use this framework. A levy % dependant on whether you are a guest or member is collected directly from the contractor once a call off contract is awarded. This percentage will never be more than 1.5% for Members and 2% for Guests.

How do I access this framework?

If your organisation is already a SEC Member then you will not need to sign an additional Access Agreement. You're already signed up.

If your organisation is new to SEC, and would like to use our frameworks as a non-member then you will need to sign our Access Agreement. You'll only need to sign this once and you'll receive access to all our Frameworks and DPS's – even those we procure in the future. You can view a draft agreement here – [DRAFT Access Agreement \(Non-Members\)](#).



Why use SEC?

Working with us means partnering with a not-for-profit organisation dedicated to supporting the housing sector. Public procurement is what we do best – since 2005 we've ensured that every framework we procure is designed by and for our customers. And, we reinvest our surplus back into the housing sector through our Training and Insights programmes.

What it means for you:

- Fully compliant route to market with advice from procurement experts across each stage of your project
- Additional support with your technical documents, procurement strategy and contract management when you need it
- Amplified social value on top of what's already delivered through your contract. You'll also help fund our reinvestment programmes delivering training, sector insights and community projects

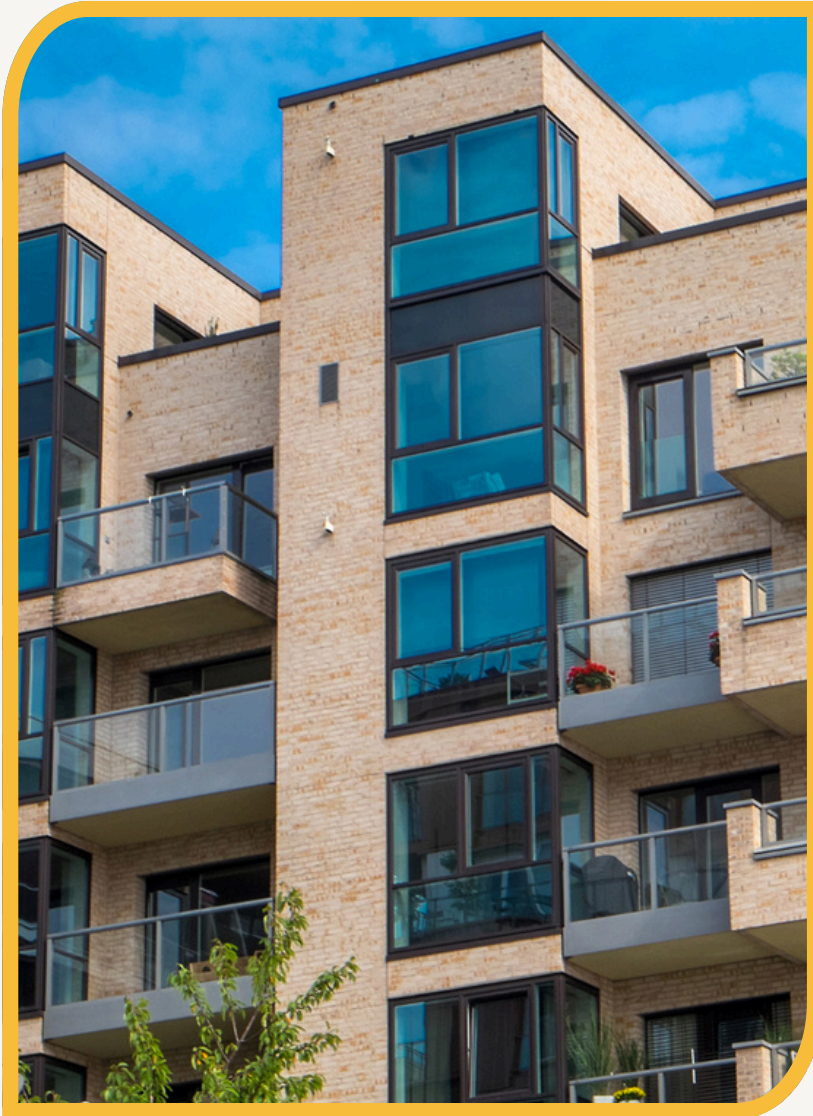


£1,000,000 investment in training that bridges the skills gap and £400,000 to community projects.

Plus £230,000 on insights projects that support better procurement practices.




Next Steps




We've got two options depending on where you are with your project.

Like to know a little more

Get in touch:

 0204 570 6637

 info@southeastconsortium.org.uk

 B1092 Galley Drive, Kent Science Park,
Sittingbourne, Kent, ME9 8GA

Ready to use this framework

[Contact Us | South East Consortium](#)