

FRAMEWORK GUIDE

Compliance Consultancy

Our consultancy frameworks connect you with experienced consultants ready to support your projects.



Asbestos Inspections and Testing

Scope of Services:

This Lot is designed to help you with your asbestos inspections and testing. It connects you to experienced consultants able to manage your asbestos containing buildings safely, and carry out testing when more intrusive work is needed.

It's important to ensure you're carrying out regular tests in line with legislative requirements. Consultants on this Lot are able to carry out management or refurbishment surveys, sample testing, analysis and air monitoring services.

Framework Reference	2024/S 000-000612
Awarded	01/10/2024
Expires	31/09/2028
Procured Under	PCR2015
Framework Tender	30% cost and 70% quality



Asbestos Inspections and Testing Suppliers



tersus

MARLOWE Environmental Services

1



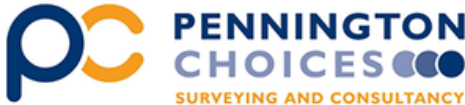
environotec

2



RIVERSIDE

3



PENNINGTON
CHOICES
SURVEYING AND CONSULTANCY

4



CUBE
ENVIRONMENTAL

5



environmental
essentials

6



thames
laboratories

7



FRANKS
PORTLOCK

8

Audit Services

Scope of Services:

This Lot is designed to help you audit your compliance activities. This includes your documents, reports, certificates, policies and procedures. It connects you to independent consultants able to provide desktop audits, quality assurance and compliance consultancy across all areas of operation.

Consultants on this Lot are able to help you achieve this across the following workstreams: Heating, Lifts, Fire Risk Assessments, Electrical Reports, Radon, Water Hygiene.

Our Suppliers:



Altair

1



bcc consultancy

2



P.C.M.

3



morgan.
lambert

4



Building Safety

Scope of Services:

This Lot is designed to help you with your building safety requirements. It connects you to experienced consultants able to provide specialist support relating to your requirements under The Building Safety Act.

This includes:

- Risk assessments and gap analysis
- Desktop studies
- Creation of Building Safety Cases
- Assessment of Golden Thread Capabilities
- Policies and procedures for inspections and the management of your properties

Our Suppliers:

FRANKHAM
GROUP



1

PC
PENNINGTON
CHOICES

SURVEYING AND CONSULTANCY

2

Altair

3

oakleaf
market leading surveys for
estates professionals

4



Fire Consultancy

Scope of Services:

This Lot is designed to help you with your fire consultancy requirements. It connects you to experienced consultants able to carry out the assessments, and support you with evaluating the risks associated with fire in your buildings.

Consultants on this Lot are able to carry out a range of different surveys you'll regularly carry out on your properties, including fire door surveys, compartmentation surveys, fire risk assessments, and asset tagging.



Fire Consultancy Suppliers



1



2



3



4



5



6



7

Heating Consultancy

Scope of Services:

This Lot is designed to help you with your heating consultancy requirements. It connects you to experienced consultants able to support you with your compliance programmes. This Lot covers the following services:

- Management of your annual service programmes
- Safety Certificate Validation – including servicing, inspection and installation certificates
- Post-service site audits
- Fumes investigations
- Condition surveys
- Energy Performance Certificates
- Client training

Our Suppliers:



1



2



3



4

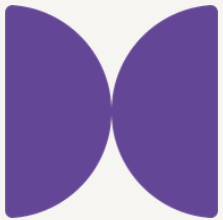


Water Hygiene Risk Assessments

Scope of Services:

This Lot is designed to help you with your water hygiene risk assessments. It connects you to experienced consultants able to monitor your water quality, identify any hazards and assess risks associated with legionella and other contaminants.

This is important to ensure you're carrying out regular tests in line with legislative requirements. Consultants on this Lot are able to provide and review risk assessments monthly, quarterly, bi-annually and annually depending on your needs.



Water Hygiene Risk Assessments Suppliers



1

RIVERSIDE

2

envirocure^{Ltd}
www.envirocure.co.uk

3



4



5



6



7



8



9

Accessing this framework

Access Options:

Direct Award

Customers can Direct Award their contract to any supplier on the framework regardless of ranking. To do this you must have a justifiable reason for going outside of Rank 1.

How long will this take me? 3 – 4 weeks depending on your internal approval process.

[Click to view our process map](#)

Mini-Competition

You're able to run a mini-competition to call off this framework. Here you can use your own specification and cost model – as well as your own cost / quality split and quality questions.

How long will this take me? 6 – 8 weeks depending on your internal approval process.

[Click to view our process map](#)



Frequently Asked Questions

Who can access this framework?

Any publicly funded body can use this framework. Access is not limited to SEC Members alone. [Full details can be found here.](#)

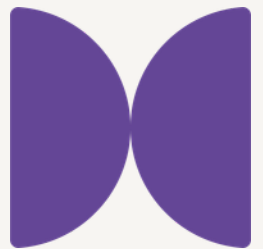
Is there a cost to access?

There is no access fee to use this framework. A levy % dependant on whether you are a guest or member is collected directly from the contractor once a call off contract is awarded. This percentage will never be more than 1.5% for Members and 2% for Guests.

How do I access this framework?

If your organisation is already a SEC Member then you will not need to sign an additional Access Agreement. You're already signed up.

If your organisation is new to SEC, and would like to use our frameworks as a non-member then you will need to sign our Access Agreement. You'll only need to sign this once and you'll receive access to all our Frameworks and DPS's – even those we procure in the future. You can view a draft agreement here – [DRAFT Access Agreement \(Non-Members\)](#).



Why use SEC?

Working with us means partnering with a not-for-profit organisation dedicated to supporting the housing sector. Public procurement is what we do best – since 2005 we've ensured that every framework we procure is designed by and for our customers. And, we reinvest our surplus back into the housing sector through our Training and Insights programmes.

What it means for you:

- Fully compliant route to market with advice from procurement experts across each stage of your project
- Additional support with your technical documents, procurement strategy and contract management when you need it
- Amplified social value on top of what's already delivered through your contract. You'll also help fund our reinvestment programmes delivering training, sector insights and community projects

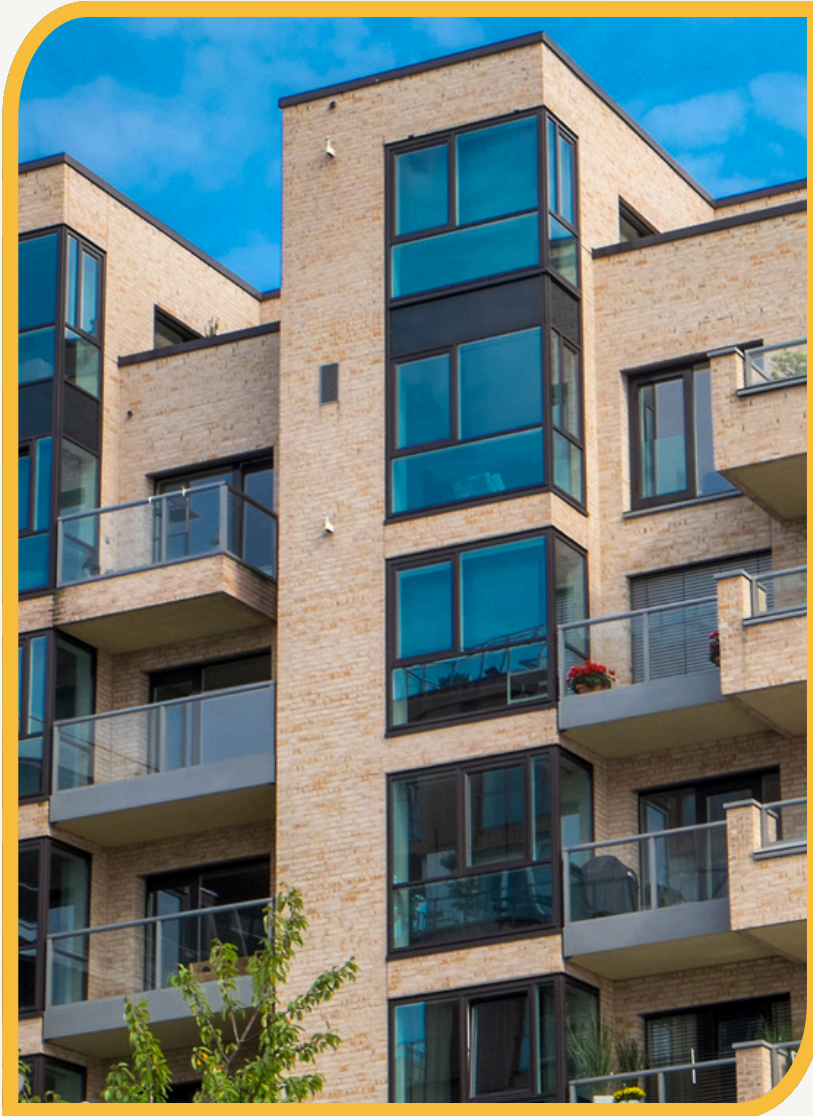


£1,000,000 investment in training that bridges the skills gap and £400,000 to community projects.

Plus £230,000 on insights projects that support better procurement practices.




Next Steps




We've got two options depending on where you are with your project.

Like to know a little more

Get in touch:

 0204 570 6637

 info@southeastconsortium.org.uk

 B1092 Galley Drive, Kent Science Park,
Sittingbourne, Kent, ME9 8GA

Ready to use this framework

[Contact Us | South East Consortium](#)